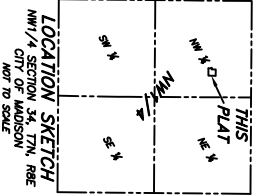
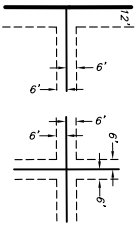


VISION CORNER DETAIL
(FOR ALL STREETS INTERSECTING ANCIENT OAK LANE)
NOT TO SCALE



LOCATION SKETCH
N1/4 SECTION 34, T7N, R8E
NOT TO SCALE

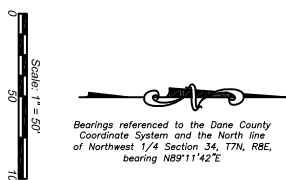
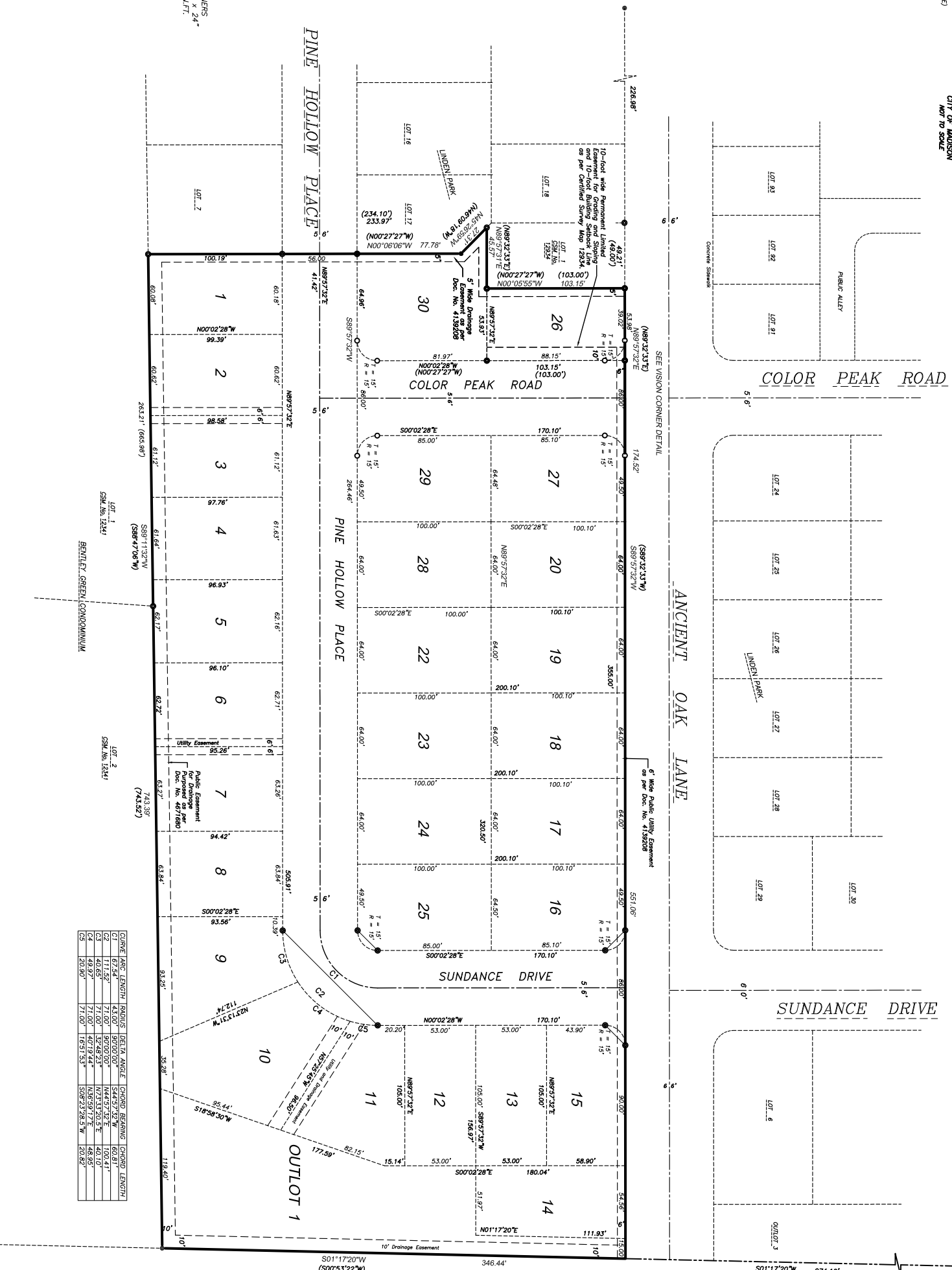


PUBLIC DRAINAGE EASEMENT DETAIL
(WIDTH OF PROPOSED EASEMENTS)
(UNLESS OTHERWISE NOTED ON PLAN)

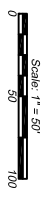
HAWK'S CROSSING

Northwest Corner
 Monument
 with Brass Cap
 N: 472294.79 Measured coordinates:
 E: 472294.69 Established (2011) coordinates:
 NAD 83 (1997) E: 778835.64 NAD 83 (1997)

South X Corner
 Monument
 with Brass Cap
 N: 472311.88 Measured coordinates:
 E: 781475.26 NAD 83 (2011) coordinates:
 N: 472311.79 Established coordinates:
 E: 781475.19 NAD 83 (1997)



Bearings referenced to the Dane County Coordinate System and the North line of Northwest 1/4 Section 34, T7N, R8E, bearing N89°11'42.2\"/>



- LEGEND:**
- = Found 1-1/4" O.D. Iron Pipe
 - = Found 3/4" Rebar
 - = Found 1-1/4" Rebar
 - = 1-1/4" O.D. x 30" Iron Rebar Set, Weight = 4,303 Lbs/Ft
- ALL OTHER LOT AND OUTLOT CORNERS ARE MARKED WITH A 1-1/4" O.D. x 24" IRON PIPE WEIGHING 1.88 LBS./LIN.FT.

CURVE	ARC LENGTH	BEARING	DETA ANGLE	CHORD BEARING	CHORD LENGTH
C1	67.24'	43.00°	90°00'00"	S44°57'42"W	60.81'
C2	111.52'	71.00°	90°00'00"	N44°57'42"E	100.41'
C3	40.59'	71.00°	32°48'23"	N75°19'20.5"E	40.10'
C4	20.30'	71.00°	16°51'53"	S06°23'28.5"W	20.82'

BIRENKOTT SURVEYING
 BIRENKOTT SURVEYING INC.
 1677 N. BRISTOL STREET
 SUN PRAIRIE, WIS. 53590
 808-837-7463

PREPARED FOR:
 BRANDON RRP, LLC
 8839 ANCIENT OAK LANE
 VERONA, WIS. 53593
 850-4959

Office Map No. 140234
 DATED: June 28, 2014